

# CYRIL POTTER COLLEGE OF EDUCATION

## FEMALE

### 1. UNIFORM

- Skirt - Grey with white pin stripes., below the knee. *Skirts above the knee are unacceptable.*
- Blouse - Plain white short-sleeve blouse. *No lace or decoration.*
  - A College scarf will be worn with blouse. (to be purchased from the college)
- Shoes - Black or navy whole shoes. *Sandals and boots will not be permitted.*

### 2. PHYSICAL EDUCATION

Students are required to wear a College T-shirt and a pair of grey, black or navy short, slacks or track pants.

### 3. AGRICULTURE

Students are required to wear a plain coloured T-shirt, long trousers and a pair of whole shoe for practical.

### 4. JEWELLERY AND HAIR DECORATIONS

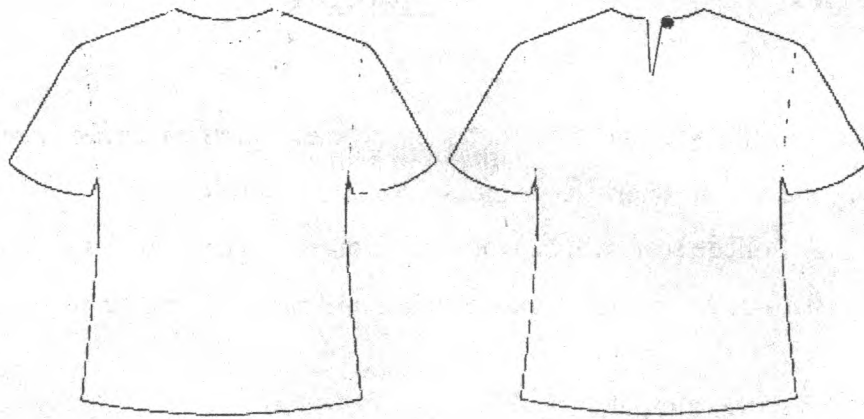
- Only one pair of small earrings will be permitted as well as one finger ring.  
(*Married women are allowed to wear a wedding band and an engagement ring.*)
- Only black hair holders are allowed.
- Braided hair styles should be moderate. Elaborately styled braids will not be allowed.
- Only black and dark brown braids are allowed.

### 5. FORMAL OCCASIONS

For formal occasions, both male and female students will wear a navy tailored blazer.

See uniform patter.

*Students MUST comply with the required uniform specification in relation to PATTERN and COLOUR.*



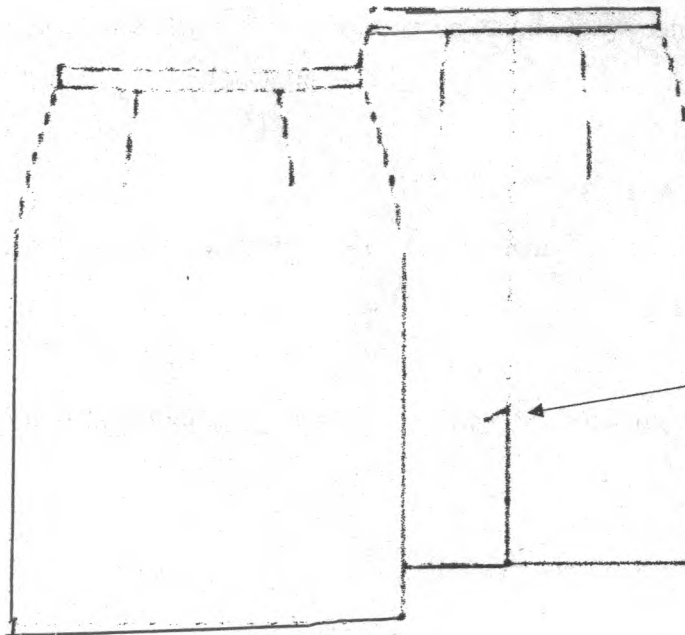
Front View

Back View

**Blouse – White Polyester or Cotton**

Front View

Back View



Knife Pleat

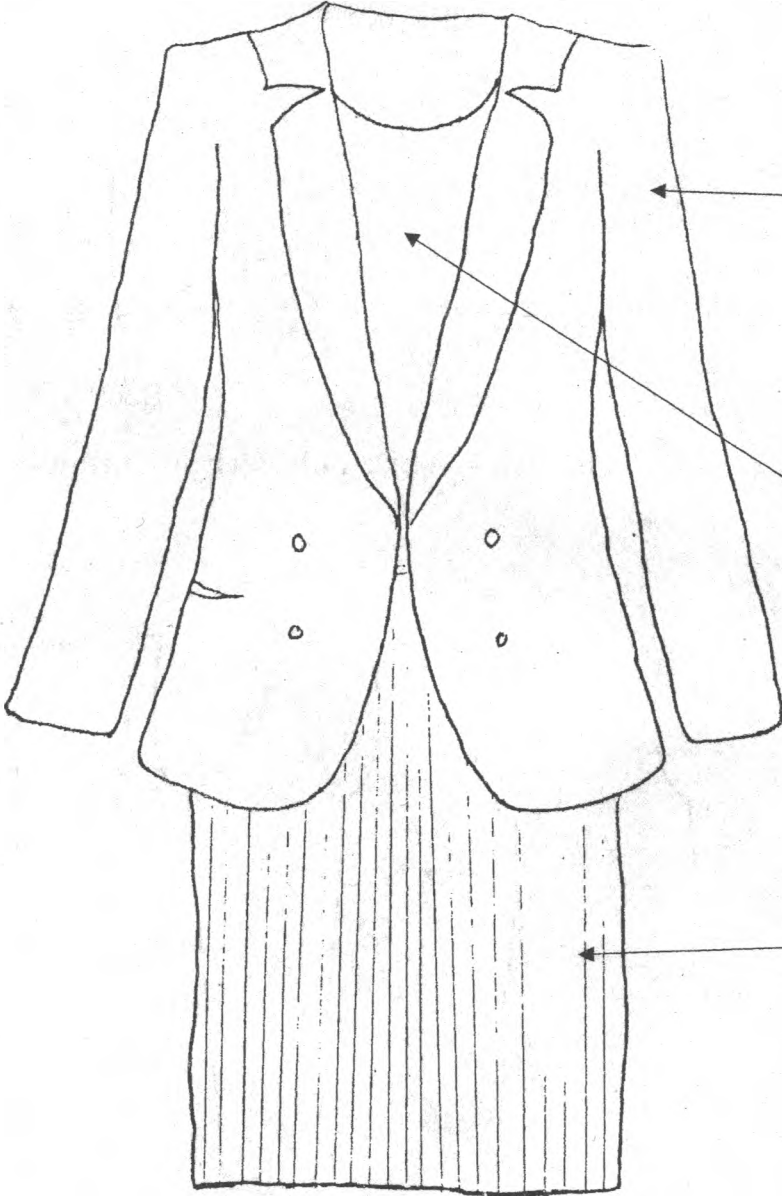
Hem Line Below  
the Knee

(NOT ABOVE)

**Skirt – Grey with white pin stripe**

**NB - NO POCKETS ON SKIRT**

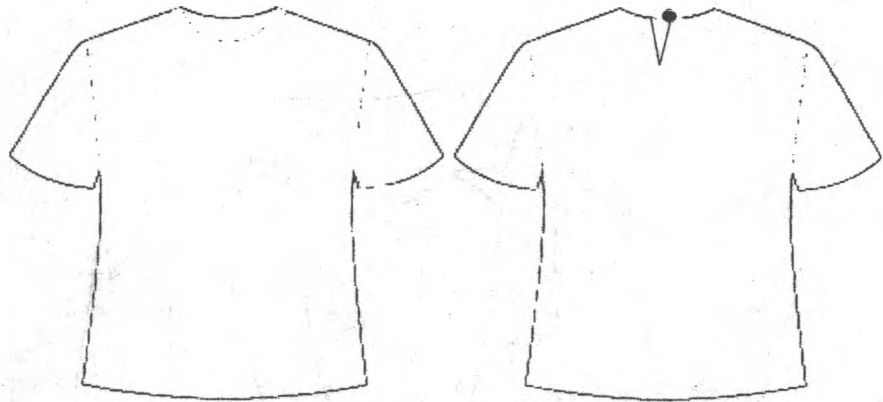
**Full View**



Navy Blazer

White Blouse  
(Polyester or Cotton

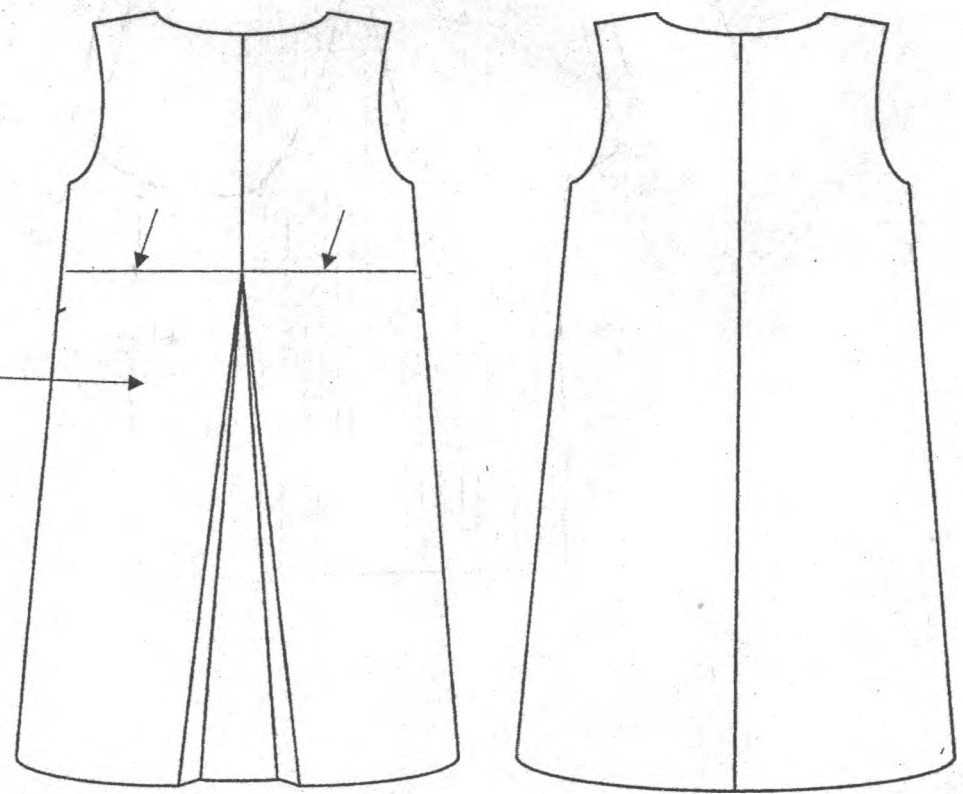
Skirt - Grey  
with white  
pin stripe



Front View

Back View

**Blouse – White Polyester or Cotton**



Inverted Pleat

Grey with white pin stripe

**Maternity Outfit**

# CYRIL POTTER COLLEGE OF EDUCATION

## MALE

### 1. UNIFORM

- Grey with white pin stripes long pants.
- Plain white shirt.
- A college tie will be worn with the shirt. (to be purchased from the college)
- Black or navy shoes. *Sandals and boots will not be permitted.*
- Black or navy socks.

### 2. PHYSICAL EDUCATION

Students are required to wear a College T-shirt and a pair of grey, black or navy short, slacks or track pants.

### 3. AGRICULTURE

Students are required to wear a plain coloured T-shirt, long trousers and a pair of whole shoe for practical.

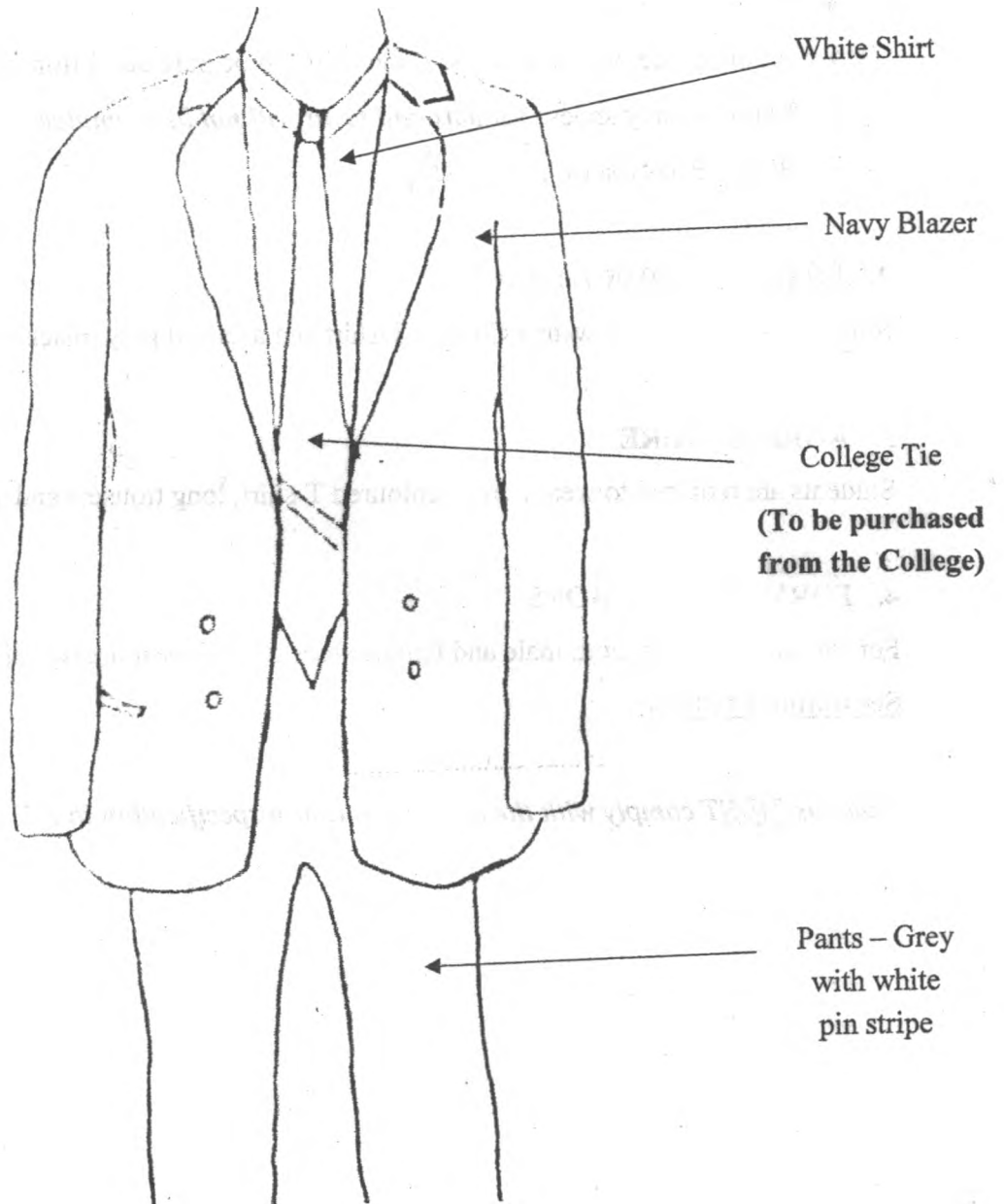
### 4. FORMAL OCCASIONS

For formal occasions, both male and female students will wear a navy tailored blazer.

See uniform patter.

*Students MUST comply with the required uniform specification in relation to PATTERN and COLOUR.*

**Male - Full View**



White Shirt

Navy Blazer

College Tie  
(To be purchased  
from the College)

Pants - Grey  
with white  
pin stripe